



Alphabetical **SEARCH** Picture **SEARCH** Part Number **SEARCH**

Go To Step Search™ Screen

**787201-1** -- 1 of 1 products

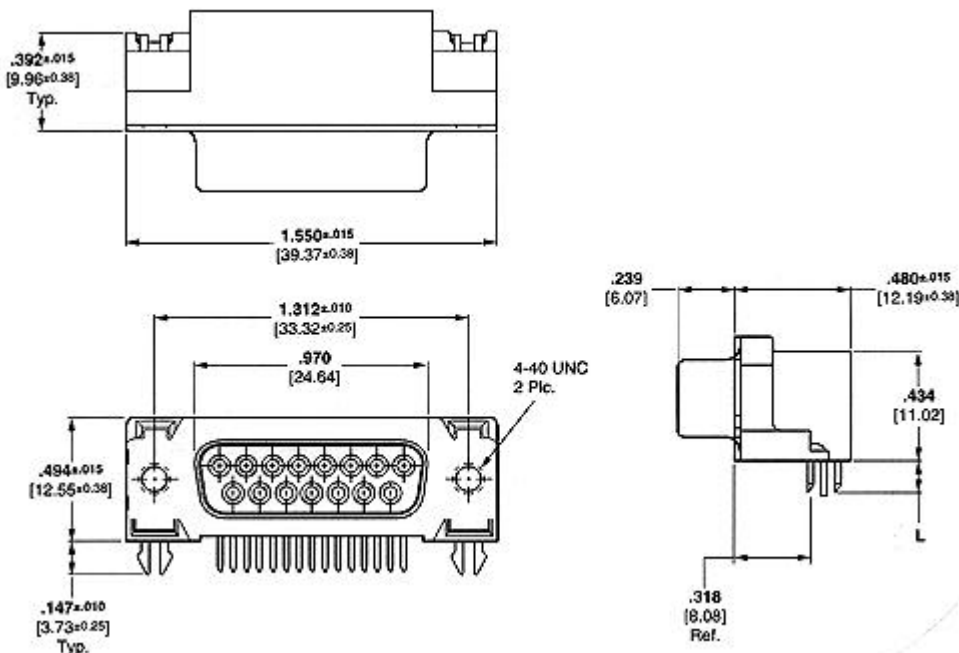
General **INFO**

**AMPLIMITE Subminiature D Connectors**  
**AMPLIMITE 2000 Subminiature D Connectors**

Sales **INFO**

Customer Drawings **SPECIFICATIONS**

Please use Customer Drawing or CAD file for design activity; line art and other pictures are general representations of product dimensions.



Line art represents typical product only.

 [Recommended PC Board Layout](#)

<b><i>Searchable Features:</i></b>	
<b># of Positions</b>	9
<b>Sex</b>	Receptacle
<b>Grounding Indents</b>	Without
<b>Mating Connector Lock Type</b>	4-40 Threaded Insert
<b>Contact Mating Area Plating</b>	Gold Flash
<b><i>Other Properties:</i></b>	
<b>Dim. L</b>	.125 [3.18] in. [mm]
<b>Contact Material</b>	Phosphor Bronze
<b>PCB Retention Method Feature</b>	Boardlocks
<b>Shell Type</b>	Front Metal Shell
<b>PCB Mount Angle</b>	Right Angle
<b>Product Series</b>	.318 Series
<b>Solder Tail Plating</b>	Tin Lead over Nickel underplating
<b>Solder Tail Length</b>	.125 [3.18] in. [mm]
<b>Housing Material</b>	Glass-Filled Polyester
<b>Color</b>	Black
<b>Shell Material</b>	Carbon Steel
<b>Shell Plating</b>	Tin over Copper
<b>Boardlock and Threaded Insert Material</b>	Steel
<b>Footprint</b>	.480 [12.19] in. [mm]
<b>Housing Material Flammability Rating</b>	UL 94V-0
<b>Comment</b>	Board Lock and Threaded Inserts are an integral part of front metal-shell.

---

[ [Main Menu](#) | [Help](#) | [Family Search](#) | [Registration](#) | [Feedback](#) ]  
[Top of Page](#)